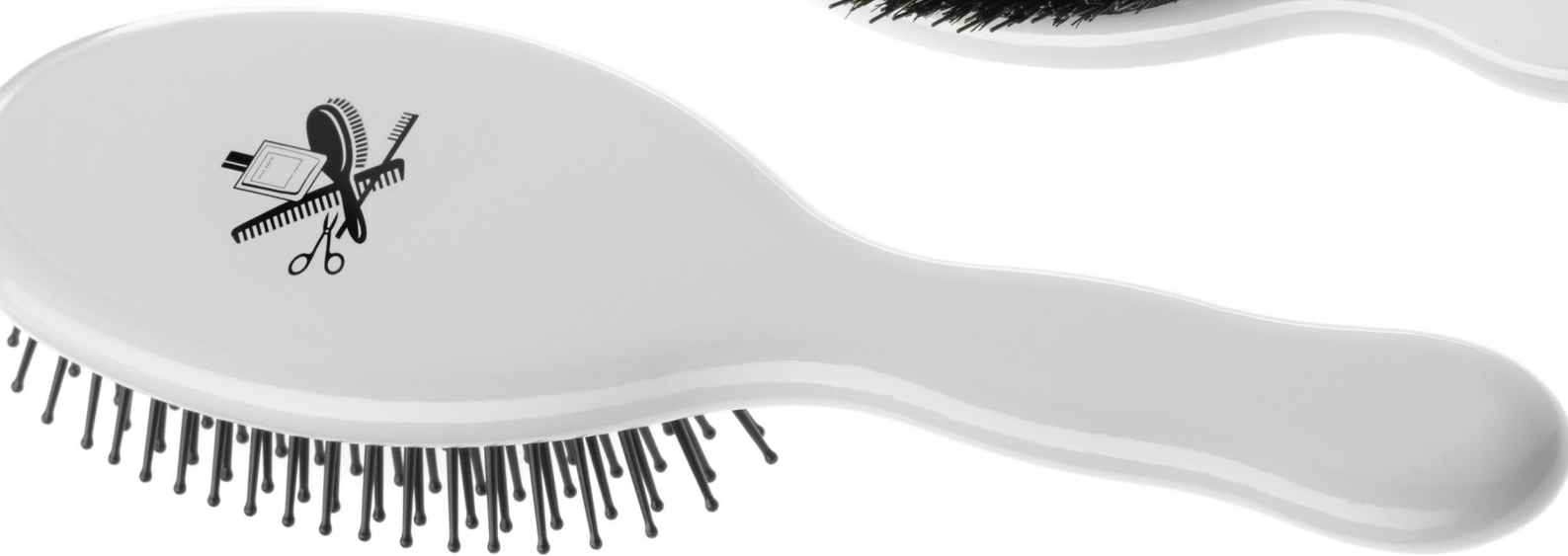
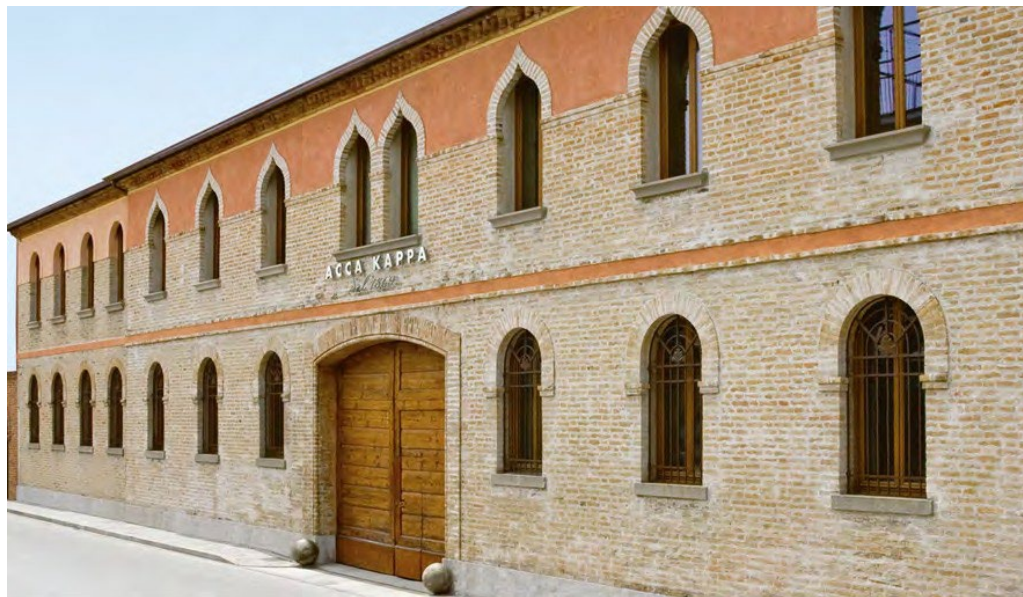


**ACCA KAPPA**

*dal 1869*





*Acca Kappa company today*

*Acca Kappa company in 1869*



# ACCA KAPPA AN ITALIAN LEGEND OF BEAUTY

The story of the Krüll family, who have led the company since 1869. The story of an old factory in the heart of the city of Treviso, Italy. The story of a lifestyle, born of Italian taste, culture and elegance.

A historic brand of excellence, Acca Kappa, is renowned for creating professional hair brushes and hair care products, unique fragrances and body care collections. A world of sensory and olfactory experiences inspired by the perfumes of the flowers and plants of the Italian gardens. Four generations of craftsmen and an absolute passion for simplicity and authentic beauty that can be seen in every item produced and in every tiny detail.

A family company that has become an industrial corporation while remaining faithful to timeless values. Love for nature, respect for the human body and exclusively made in Italy.

---

# FLAGSHIP STORE, MILAN



# FRAGRANCE

---

White Moss, Acca Kappa's signature fragrance, interprets the precious essential oils of Lavender and Juniper, invigorated by base notes of Musk and Amber. An exceptional olfactory harmony exalting the freshness of the Italian spring, where nature is narrated through sensuality and poetry.



# FORMULATION

---

Acca Kappa White Moss is formulated with a refined selection of fine ingredients to respect the skin and appeal to both sexes.

The shampoo is formulated with soy and wheat protein known to improve hair elasticity and shine, while provitamin B5 in the conditioner hydrates and restores moisture.

Chamomile and calendula extract are utilized in the shower gel to soothe and purify skin while shea butter in the lotion nourishes, leaving skin soft.



Olive Oil



Calendula



Shea Butter



Jojoba Seed Oil

# HOTELIER COLLECTION

---

## DISPENSERS

300ml Mini Bracket



\*Mini Bracket Exclusive to Gilchrist & Soames  
US Patent 10,527,224 B1



**ACCA KAPPA**

*dal 1869*

