

GUILD + PEPPER[®]



GUILD + PEPPER

Brand Story



Carefully crafted with high-quality ingredients and essential oils, the GUILD+PEPPER Collection represents the perfect alchemy of past and present, a thoroughly modern throwback designed to intrigue today's discerning traveler.

[Click to watch
brand video](#)

The GUILD+PEPPER Collection marries the strength and unity of a guild with the nature and uniqueness of spice. Classic amber bottles, craft paper labels, and clean, modern typography on a classic silhouette will enhance the ambiance of any guest room, from industrial to chic.

Strength with flavor, history with boldness. Allow your guests to experience an authentic reflection of the past with a distinctly modern twist.



GUILD + PEPPER

Warm Oak Fragrance

Warm oak is balanced by fresh hints of bergamot and Moroccan grapefruit, mixed with aromatic and spicy coriander and accompanied by a trail of sensual oud and cedarwood for a distinctly contemporary fragrance ideal for men and women alike.

The Ingredients

Irish Moss Extract: Used for centuries, Irish Moss is a natural emollient providing long-lasting hydration for today's target customer.

White Oak: known for its antioxidant properties, white oak is a well-respected and relevant extract that soothes the skin.

Heather: Soothing and calming for sensitive skin, Heather is often used in herbal therapies.

Green Tea: Green tea extract known for its ability to be naturally rich in antioxidants & protects the skin from the damaging effect of free radicals.



The Formulation

Hair Care

SHAMPOO

Carefully blended with natural extracts, cleans hair without stripping away natural moisture, leaving hair nourished and revitalized.

CONDITIONER

A rich creamy texture that detangles, softens and restores the hair, delivering essential hydration and shine. A potent blend of ingredients that nurtures your hair from root to tip.

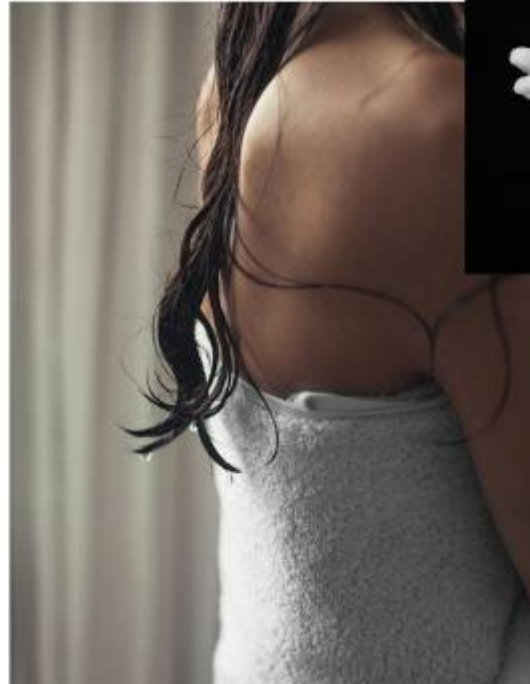
Body Care

BODY WASH

Silky in texture and refined in hydration properties.

BODY LOTION

A modern combination of fast absorbing, hydrating performance ingredients, that are nutrient rich to protect the skin from drying and provide a soft and silky appearance.



Straight

Wavy

Curly

Coiled

Tightly Coiled

Normal

Dry

Oily

GUILD + PEPPER

Hotelier Collection – Single Line

30ml bottles, 28g & 42g soap



Recyclable



Leaping Bunny certified



EcoVadis certified

GUILD + PEPPER

Hotelier Collection - Dispensers

360ml Mini Bracket



*Mini Bracket Exclusive to Gilchrist & Soames US Patent 10,527,224 B1

**Locking Collar available on request

GUILD + PEPPER

